

## How will ESB and Coillte help protect the local environment?

Ireland is moving toward a greener, more sustainable future based on reduced fossil fuel imports, lower CO2 emissions and enhanced energy security. Coillte and ESB supports this energy transition.

The planning permission granted by An Bord Pleanála (ABP) in 2013 requires Castlepook Wind Farm to construct and operate the development in accordance with a number of planning conditions. All conditions will be strictly adhered to during construction. This is to protect the environment and ensure that the community is considered at all stages from construction to operation of the wind farm. We will also ensure the protection of the local heritage by having an archaeologist onsite throughout excavation works.

Castlepook Wind Farm's Project Team will work alongside the Coillte management and environmental teams to ensure that the wind farm project conforms to all statutory requirements and best practice guidelines in relation to environmental protection.

A Traffic Management Plan, approved by Cork County Council, will be implemented to ensure that local people are not inconvenienced due to the project and to protect health and safety. Regular updates will be provided to the local community during construction via our website: [www.castlepookwindfarm.ie](http://www.castlepookwindfarm.ie)

### Turbine Locations and Setback

The turbine locations have been carefully selected and distributed across the Castlepook forest to minimise any potential impact on neighbouring residential properties. All turbines within the development will be located in accordance with consented planning permission ref. no. PL.04.240434.

### Noise and Shadow Flicker

As part of the environmental studies completed for the project, noise levels have been modelled and assessed from a range of locations around the site under different conditions to ensure that it remains within the limits set out in the planning permission. Similarly, shadow flicker has also been modelled and studied to ensure that it remains within the limits set out in the planning permission and Castlepook Wind Farm will continuously monitor the situation to ensure that it does not adversely impact upon surrounding dwellings.

Cork County Council is the regulatory authority that has the responsibility to ensure that the planning permission conditions are complied with during construction and operation of the wind farm.

## How will my community benefit?

A Community Benefit Scheme will be established for the Castlepook Wind Farm, which will include:

- Improving the local recreational amenity opportunities by upgrading existing forest tracks to a high standard.
- Establishing a community benefit fund. Castlepook Wind Farm welcomes proposals from local residents about initiatives or projects that they feel would benefit their area.
- Already, new bike trails part funded by the project have been developed so that no temporary loss of recreational amenity results.

### Other benefits:

- Supporting local businesses, for example when purchasing fuel for machinery, raw materials for construction or when renting accommodation.
- Protecting the environment by replanting trees to replace those removed from Castlepook Forest.

## Can I access Castlepook Forest?

The Ballyhouras have become a focus for various recreation activities in recent years, notably due to the development of the Ballyhoura Mountain Bike Trails by Coillte in partnership with the Ballyhoura Heritage & Environment Ltd.

In October 2015, it is planned to start construction of the Castlepook Wind Farm. In the interest of public safety, use of the "Castlepook Loop" and part of the "Streamhill Loop" from waymark 6, will be unavailable to the public during construction of the wind farm. Normal access will be restored upon completion of the project in August 2017.

Alternative bike trails were constructed in early 2014 which was part funded by the project providing an alternative to the 'Castlepook loop' bike trails while construction of the wind farm is in progress. These additional trails, which are approximately 3.8 km, will remain following completion of the wind farm, providing a significant permanent enhancement of the trail system.

The Ballyhoura Way and all other walking trails remain open to the public.

Please see our website [www.castlepookwindfarm.ie](http://www.castlepookwindfarm.ie) for details of walk and bike trails entrance location and routes.

## WHAT IS HAPPENING NOW/NEXT?

Timescale	Item
<b>October 2015</b>	<ul style="list-style-type: none"> <li>• Newsletter distribution</li> <li>• Community engagement</li> <li>• Ground testing along cable route</li> <li>• Site establishment</li> </ul>
<b>November 2015 – January 2016</b>	<ul style="list-style-type: none"> <li>• Drainage works</li> <li>• Site road upgrade</li> <li>• Walking &amp; bike trail closures</li> </ul>



Castlepook Wind Farm's project team are visiting with local community members to provide information about the project and the construction timeline.

*The Castlepook team are committed to being open and communicating proactively with the local community throughout the project and responding to community needs that arise.*

For more information please contact us

LoCall: 1890 800 163

Email: [info@castlepookwindfarm.ie](mailto:info@castlepookwindfarm.ie)

Our contact details are also available on our website: [www.castlepookwindfarm.ie](http://www.castlepookwindfarm.ie)



Project Newsletter No: 1  
October 2015



## Welcome to the first project newsletter for Castlepook Wind Farm, Co. Cork. The purpose of this newsletter is to keep you up to date with the development of Castlepook Wind Farm as it progresses to construction and into operation.

The Castlepook Wind Farm is a joint venture between ESB and Coillte and will be constructed in the Ballyhoura Forest in Co. Cork. This joint venture between ESB and Coillte is an equal partnership.

### The Castlepook Wind Farm will:

- Produce clean electricity for homes, farms, hospitals, schools and businesses in Ireland.
- Comprise of 14 wind turbines and an on-site substation.
- Have a capacity to produce 33.1 Megawatts (MW) of electricity which will supply the equivalent of approximately 17,000 households.
- Include a Community Benefit Scheme that will contribute funding to local projects and initiatives.
- Improve the local recreational amenity by upgrading existing forest tracks to a higher standard.
- Improve the local economy by supporting local businesses.
- Contribute towards the Government's target of sourcing 40% of electricity from renewable sources by 2020.
- Support the transition from reliance on imported, polluting, fossil fuels to cleaner, locally-generated renewable energy.

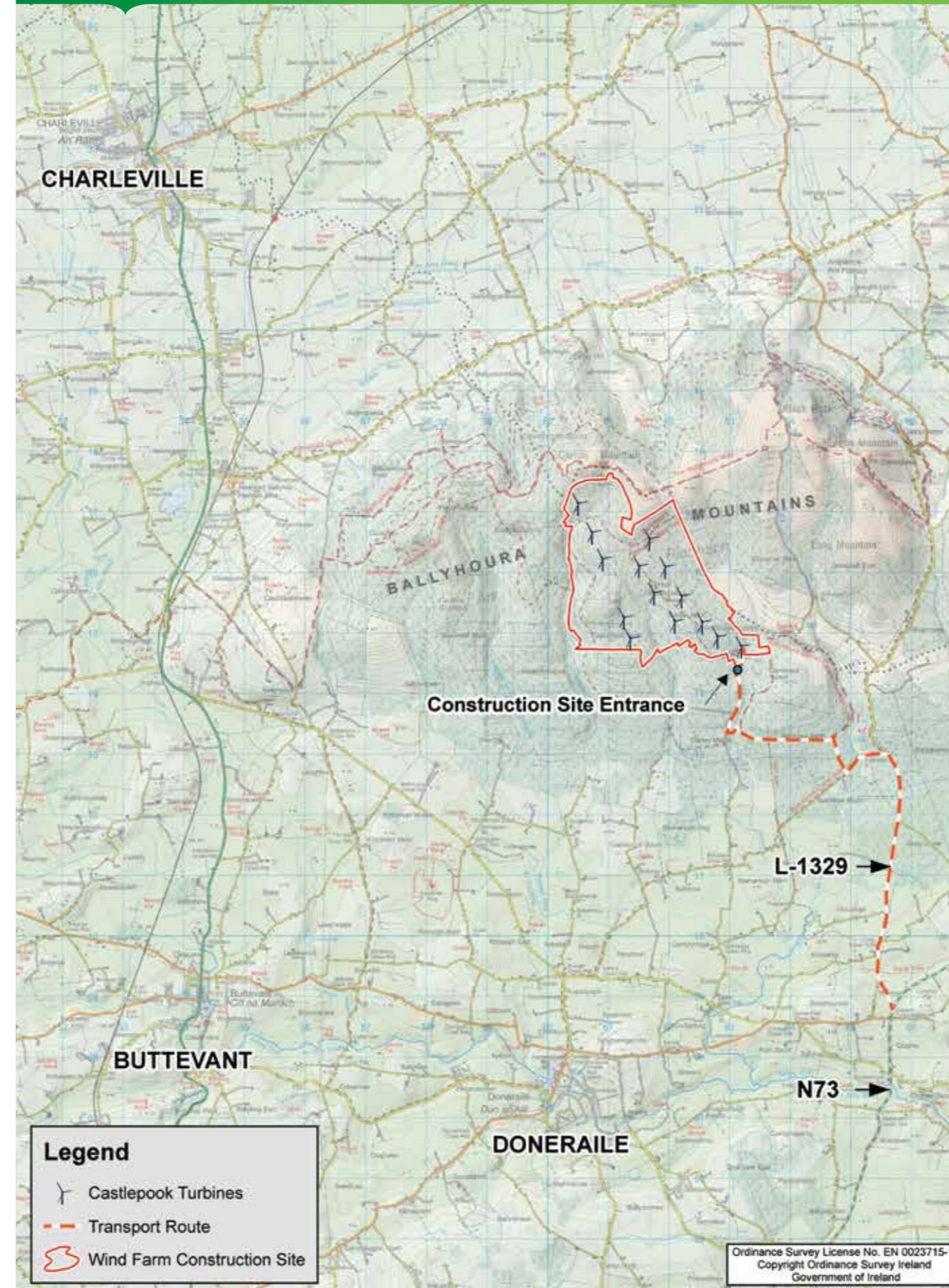
In addition, we have supported the construction of additional Bike Trail loops within the Ballyhoura Mountain Bike Trails.



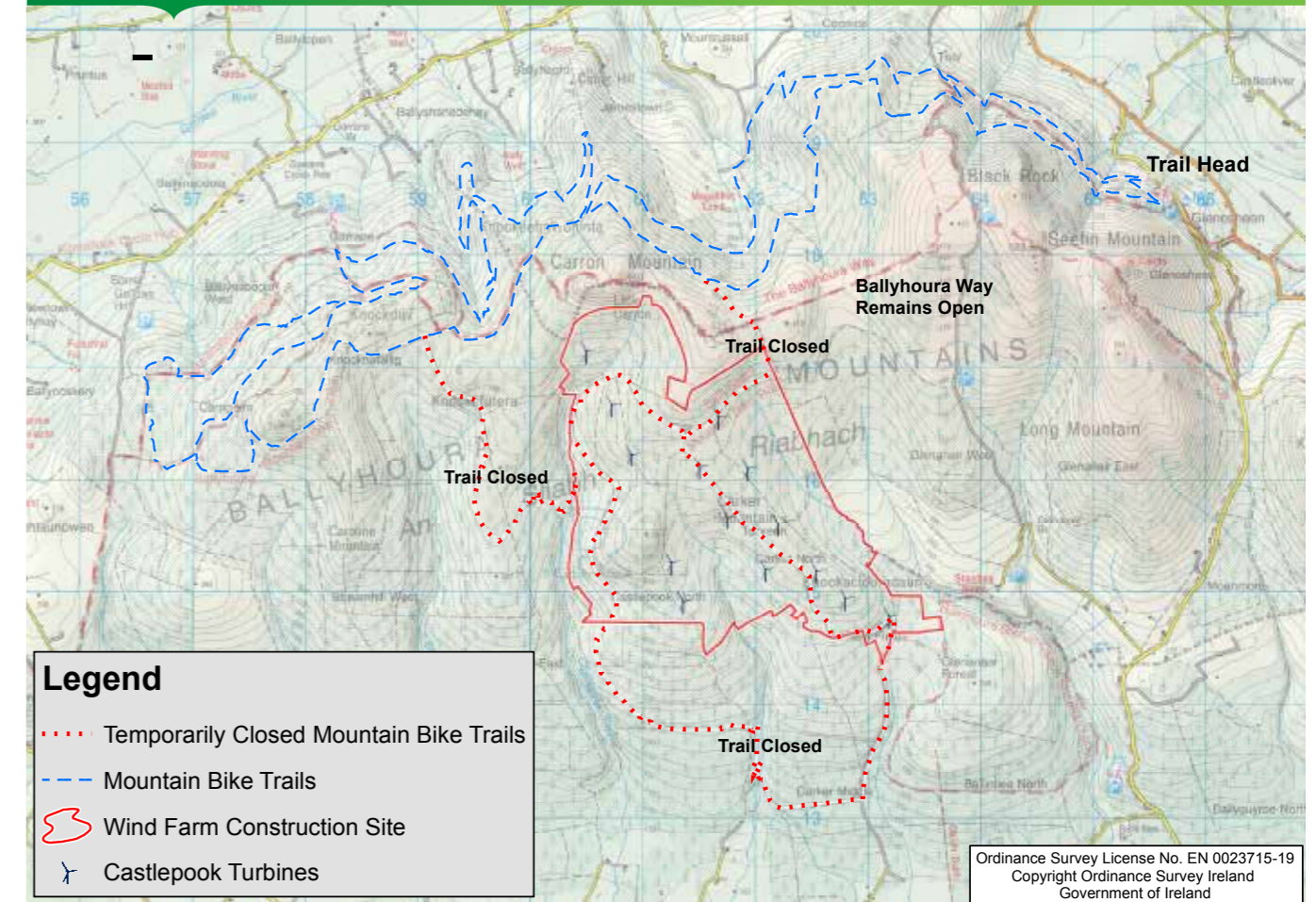
### PROJECT TIMELINES

- |                    |   |
|--------------------|---|
| <b>2008 – 2010</b> | <ul style="list-style-type: none"> <li>• Feasibility &amp; environmental impact studies</li> <li>• Pre-planning assessments</li> <li>• Community engagement</li> <li>• Preparation of planning application</li> </ul> |
| <b>Summer 2011</b> | <ul style="list-style-type: none"> <li>• Planning application submitted</li> </ul>  |
| <b>Spring 2013</b> | <ul style="list-style-type: none"> <li>• Planning permission granted</li> </ul>   |
| <b>Winter 2014</b> | <ul style="list-style-type: none"> <li>• Community engagement</li> <li>• Construction of Ballyhoura mountain bike trails</li> </ul>   |
| <b>Autumn 2015</b> | <ul style="list-style-type: none"> <li>• Community engagement</li> <li>• Construction activities commence on the wind farm site</li> </ul>  |
| <b>Spring 2016</b> | <ul style="list-style-type: none"> <li>• Community engagement</li> <li>• Commence underground cable route construction to Charleville Sub-station</li> </ul>  |
| <b>Winter 2016</b> | <ul style="list-style-type: none"> <li>• Community engagement</li> <li>• Delivery of wind turbine components</li> <li>• Commence installation of turbines</li> </ul>  |
| <b>Summer 2017</b> | <ul style="list-style-type: none"> <li>• Community engagement</li> <li>• Commissioning (testing) of turbines and substation begins</li> <li>• Fully operational wind farm</li> </ul>                                  |
| <b>Autumn 2017</b> | <ul style="list-style-type: none"> <li>• Community engagement</li> <li>• Full access to Ballyhoura Forest resumes</li> </ul>  |

### CASTLEPOOK WIND FARM



### CASTLEPOOK & BALLYHOURA BIKE TRAILS



### ABOUT COILLTE

Coillte's core purpose is to enrich lives locally, nationally and globally through the innovative and sustainable management of natural resources. Coillte is a commercial semi-state company operating in forestry, land based businesses, renewable energy and panel products.

Established in 1988, the company currently employs approximately 1,000 people. It owns over 445,000 hectares of land, about 7% of the land cover of Ireland. Coillte's forests are managed in accordance with strict environmental, social and economic standards.

### WHAT IS BEING BUILT?

The Castlepook Wind Farm development which was granted planning permission by An Bord Pleanála in 2013 and comprises of 14 wind turbines. Each wind turbine will have an overall maximum height dimension of 126 meters. The wind farm will have a capacity to produce electricity which will supply the equivalent of approximately 17,000 households. The wind farm will connect to the existing electricity distribution system at Charleville via an underground 38kV cable that will be installed as part of the wind farm construction works.

### ABOUT ESB

ESB is Ireland's foremost energy company and the largest supplier of renewable electricity in Ireland. Through innovation, expertise and investment, ESB is leading the way in developing a modern, efficient electricity system, capable of delivering sustainable and competitive energy supplies to our customers. Every day, ESB works for a better energy future by investing in low carbon generating technologies, building smarter electricity networks and working with others to find innovative solutions to today's energy challenges.

Established in 1927, ESB is a strong, diversified and vertically integrated utility. ESB operates right across the electricity market: from generation through transmission, and distribution to supply and employs over 7,000 staff. ESB also operates in a range of complementary sectors including telecommunications, international engineering consultancy and gas.

For more information please contact us

LoCall: 1890 800 163

Email: [info@castlepookwindfarm.ie](mailto:info@castlepookwindfarm.ie)

Our contact details are also available on our website:

[www.castlepookwindfarm.ie](http://www.castlepookwindfarm.ie)